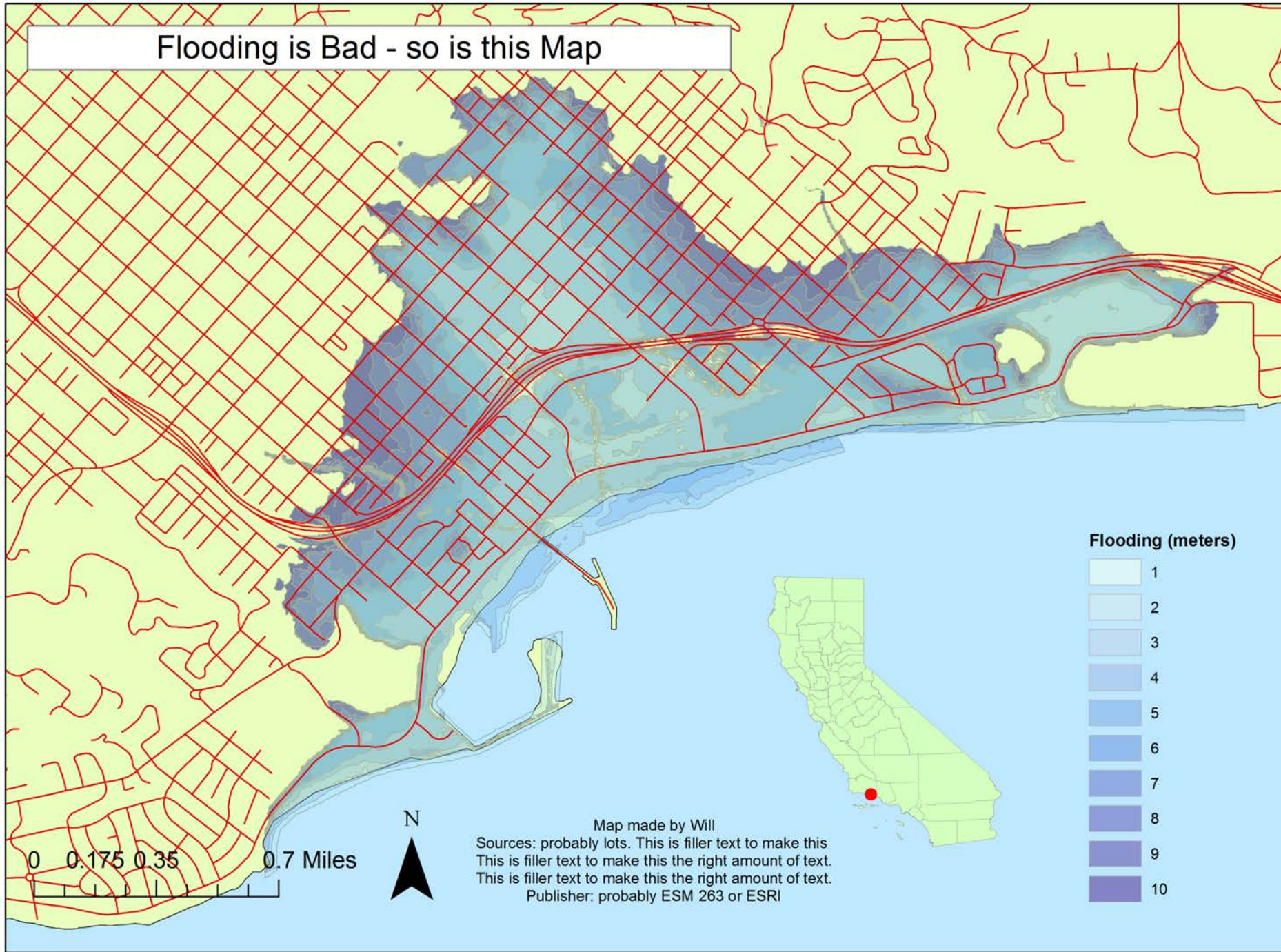


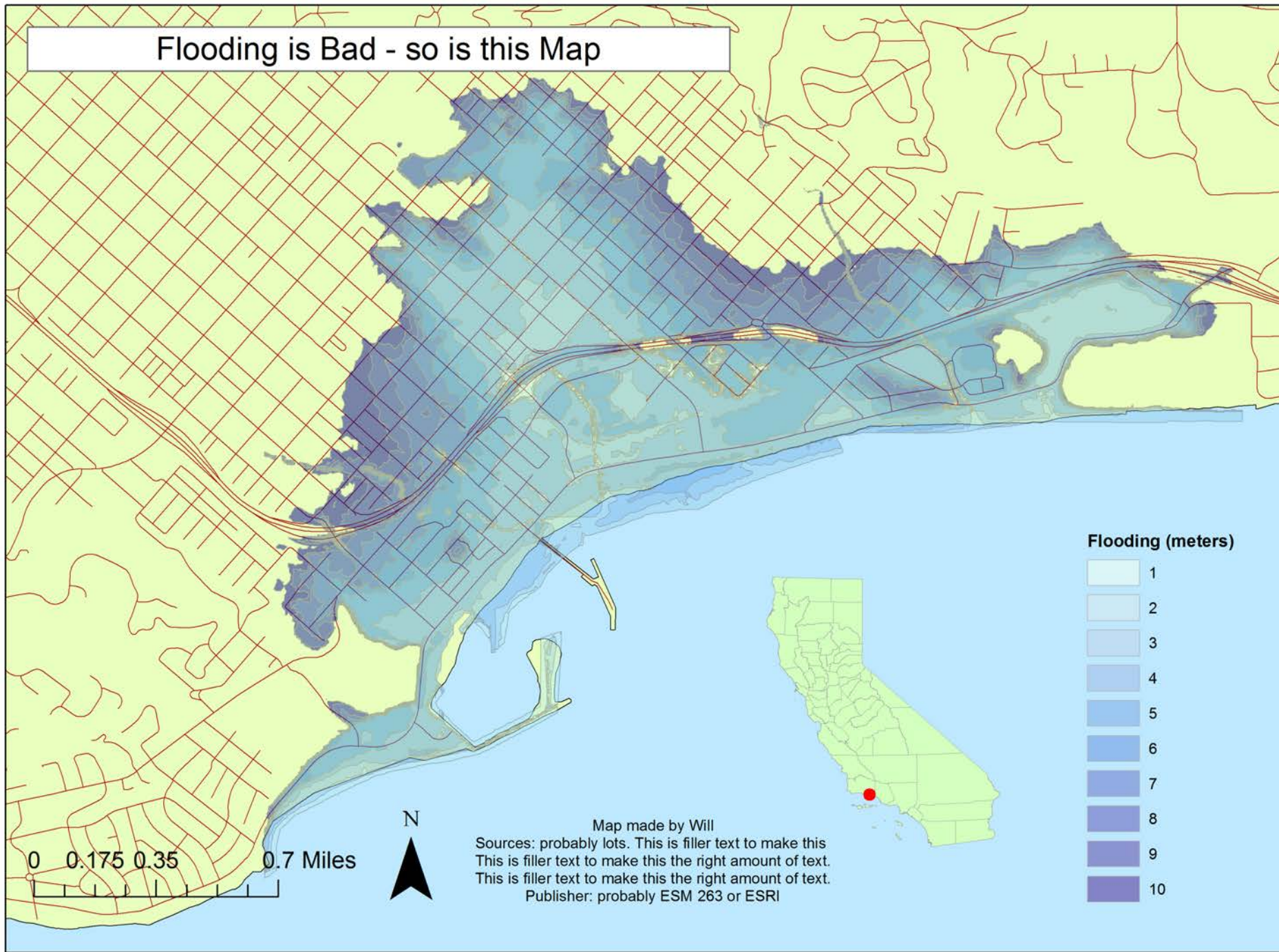
Assignment 2

Fun with floating map elements and field calculator

Flooding is Bad - so is this Map



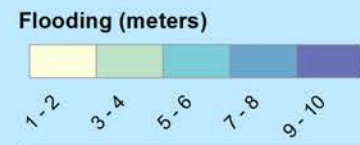
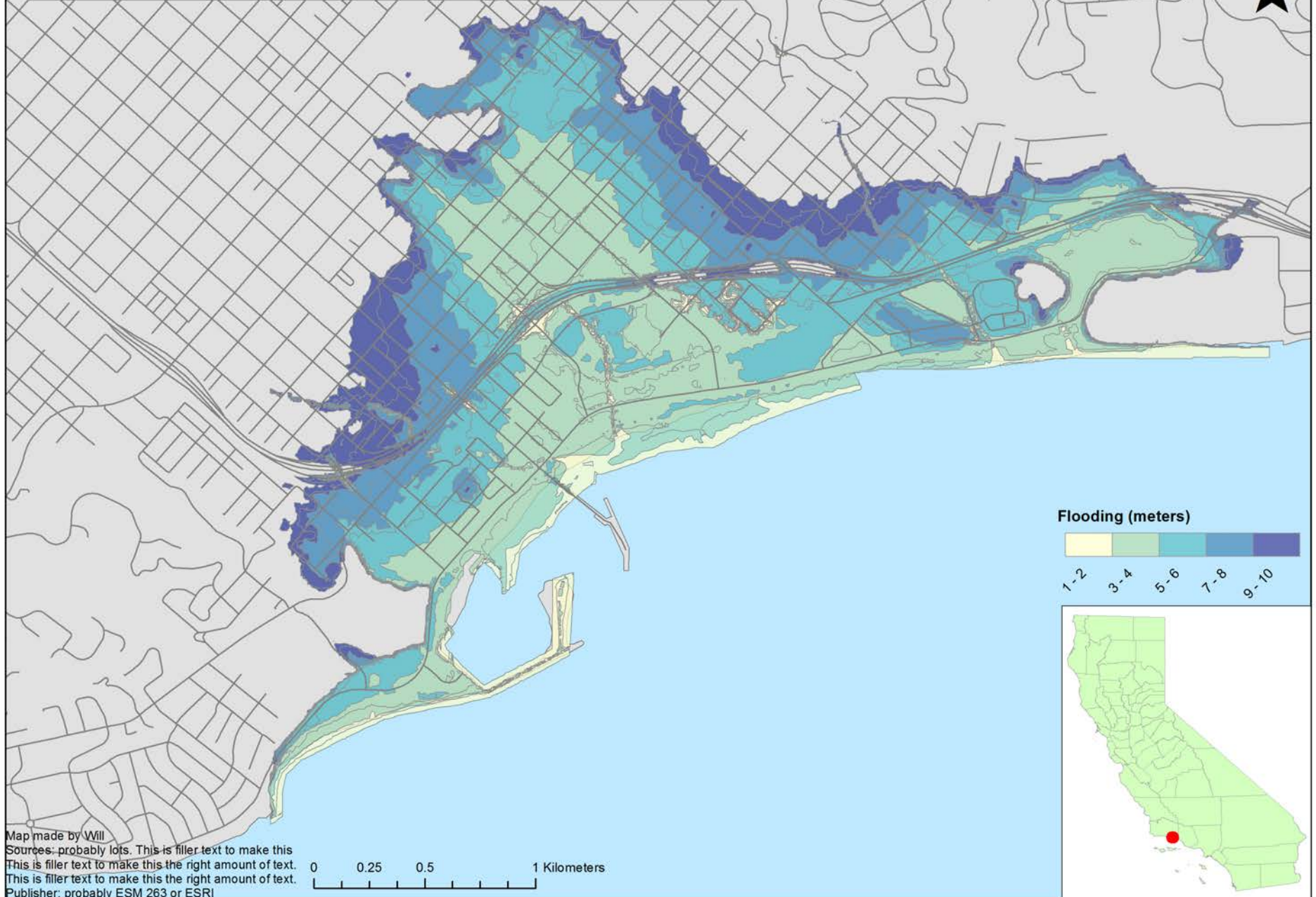
Flooding is Bad - so is this Map



“Floating” Map elements

- Map elements should look like they belong
- What’s the point of your map?
 - Everything should serve the main data

Flooding is Still Bad - This Map isn't Quite as Bad

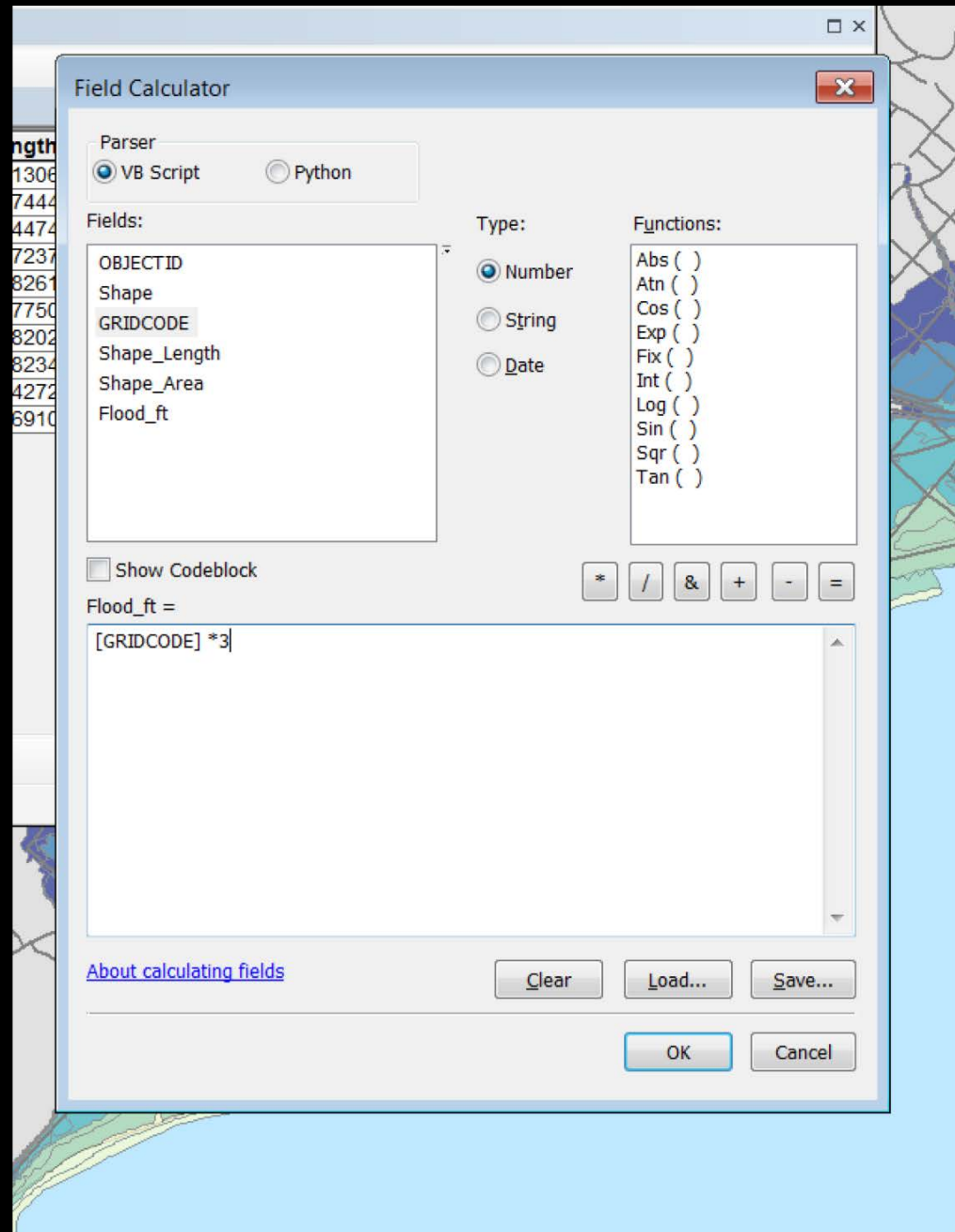
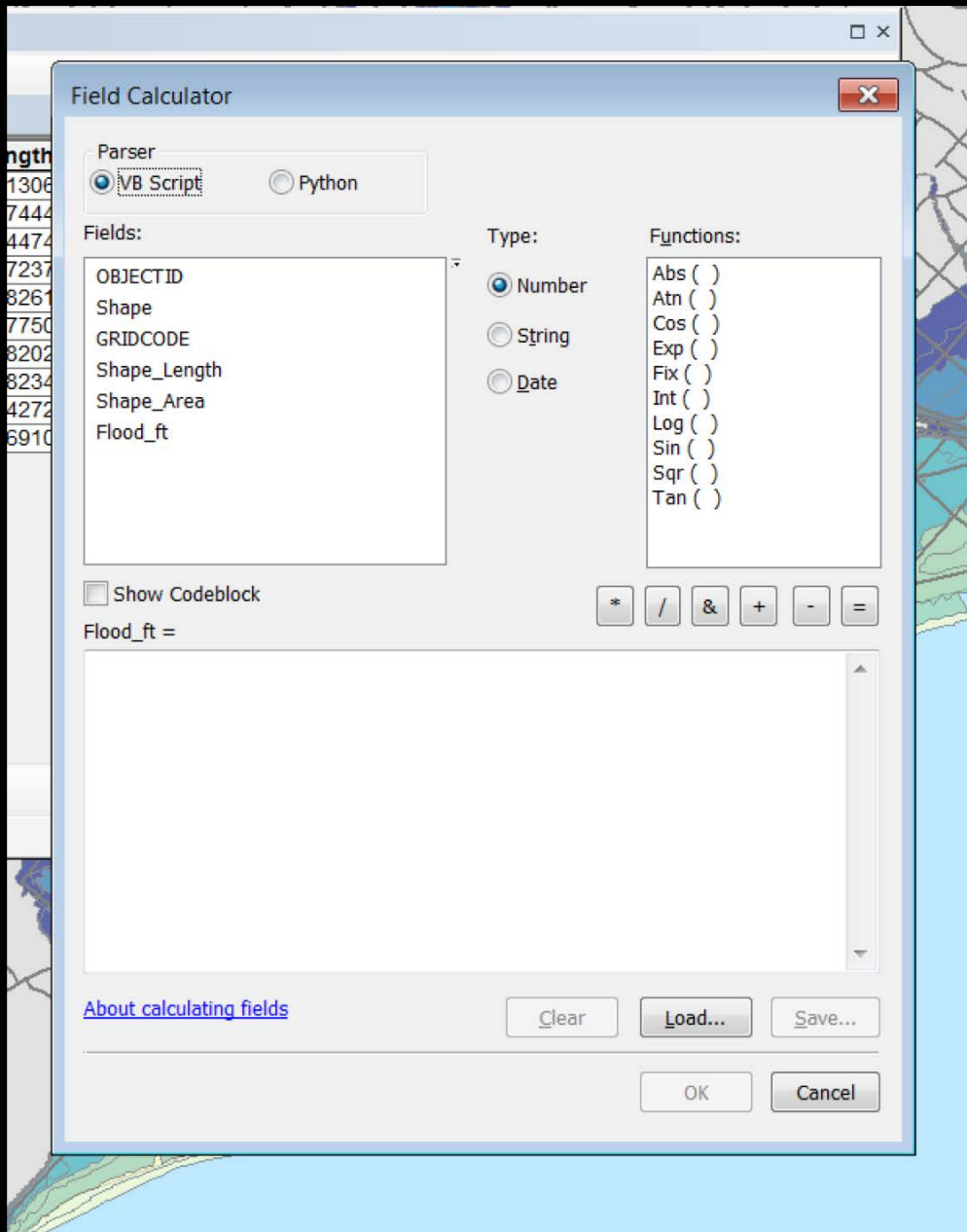


Map made by Will
Sources: probably lots. This is filler text to make this
This is filler text to make this the right amount of text.
This is filler text to make this the right amount of text.
Publisher: probably ESM 263 or ESRI



Field Calculator

- Calculates fields....
- Does mathematical/logical operations (and more)
- Uses a single equation to calculate results for all rows/objects



Table



Elevation

	OBJECTID *	Shape *	GRIDCODE	Shape_Length	Shape_Area	Flood_ft
	1	Polygon	1	14605.913062	108664.866085	3
	2	Polygon	2	28251.774447	197678.781799	6
	3	Polygon	3	45993.844746	584416.014787	9
	4	Polygon	4	61325.172376	1315018.620044	12
	5	Polygon	5	57278.782618	954732.157153	15
	6	Polygon	6	48092.177505	561903.202403	18
	7	Polygon	7	45460.682025	496807.732011	21
	8	Polygon	8	45888.882341	453984.377345	24
	9	Polygon	9	45134.142726	369995.408783	27
	10	Polygon	10	42513.569101	383826.123603	30